



CDS dispenser

chemicals and auxiliaries just in time

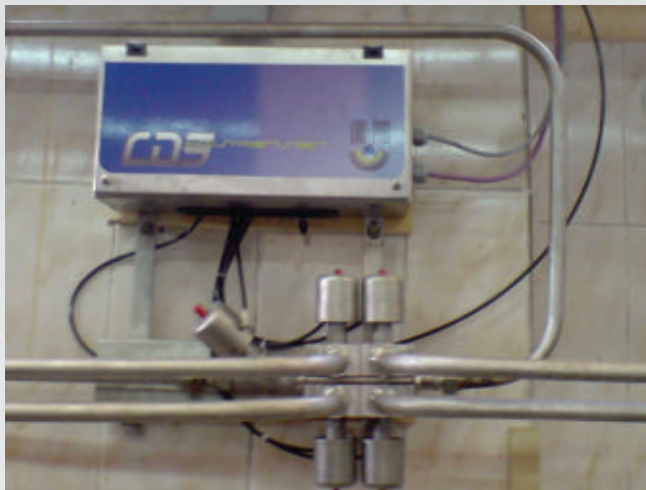


CDS-Dispensing System

The Chemical Dispensing System CDS is used to supply textile machines and other machines with liquid chemicals. Depending on the controllers being used on the machines they are supplied with chemicals in fully automatic mode, meaning that the controller of the machine requests the required chemicals and the Chemical Dispensing System CDS supplies these and confirms that the correct amount has been sent to tank requested.

A standard system is equipped with 3 main modules:

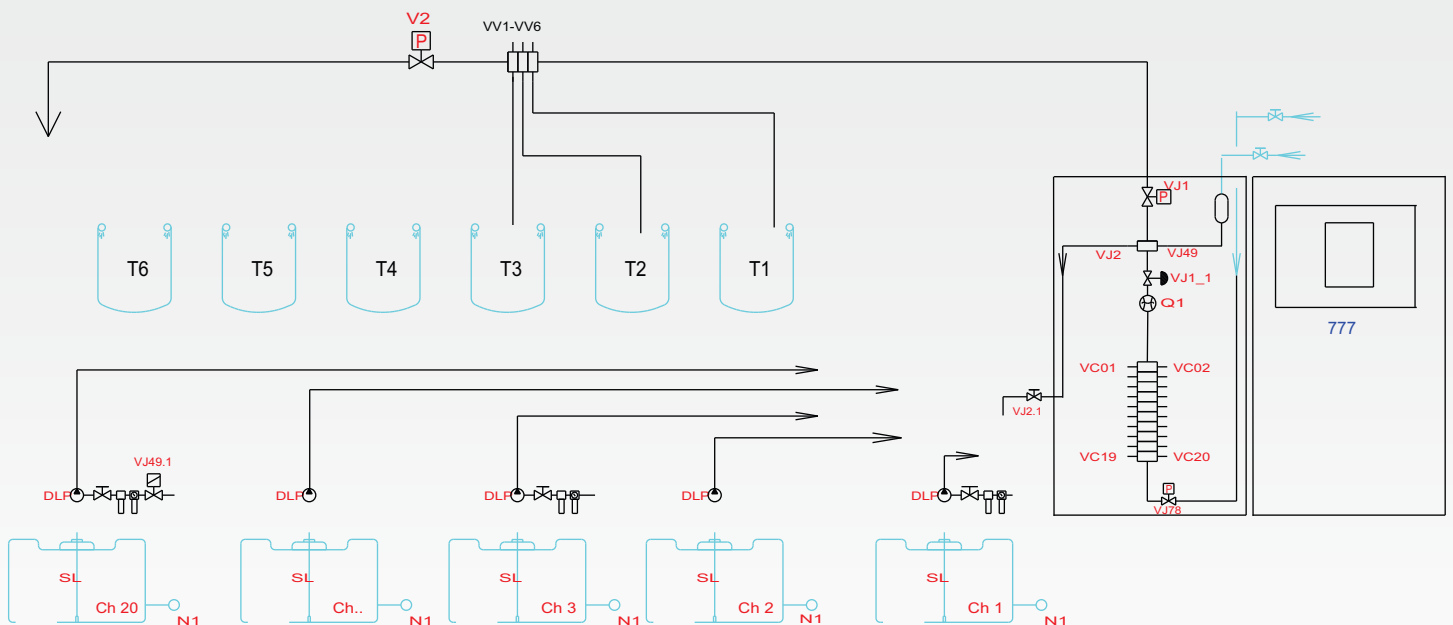
- Controller
- Chemical dosing module including the chemical pumps
- Distribution module



CDS dispenser



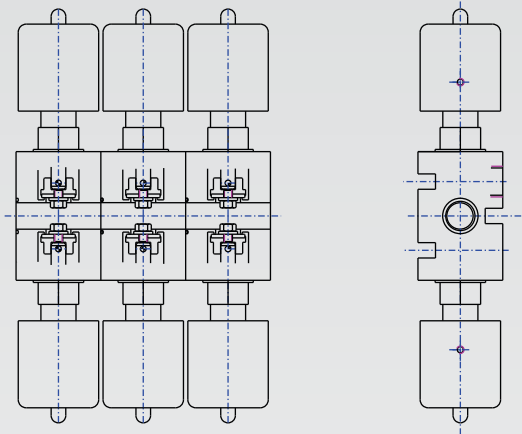
Each module can be placed independently somewhere inside the factory so that also complicated layouts can be realized. For example, one chemical dispensing module can supply two dyehouses by using two distribution modules.



The heart of the Chemical Dispensing Module is the Coriolis flowmeter, which measures the mass going through the flowmeter accurately (up to 0.5 % of the requested amount, depending on the amount being measured).



The whole system is made of stainless steel and allows to dose 98 % of the available chemicals used in the textile industry. All components (valves, flanges and piping) are specially designed for low contamination and fast wash out.

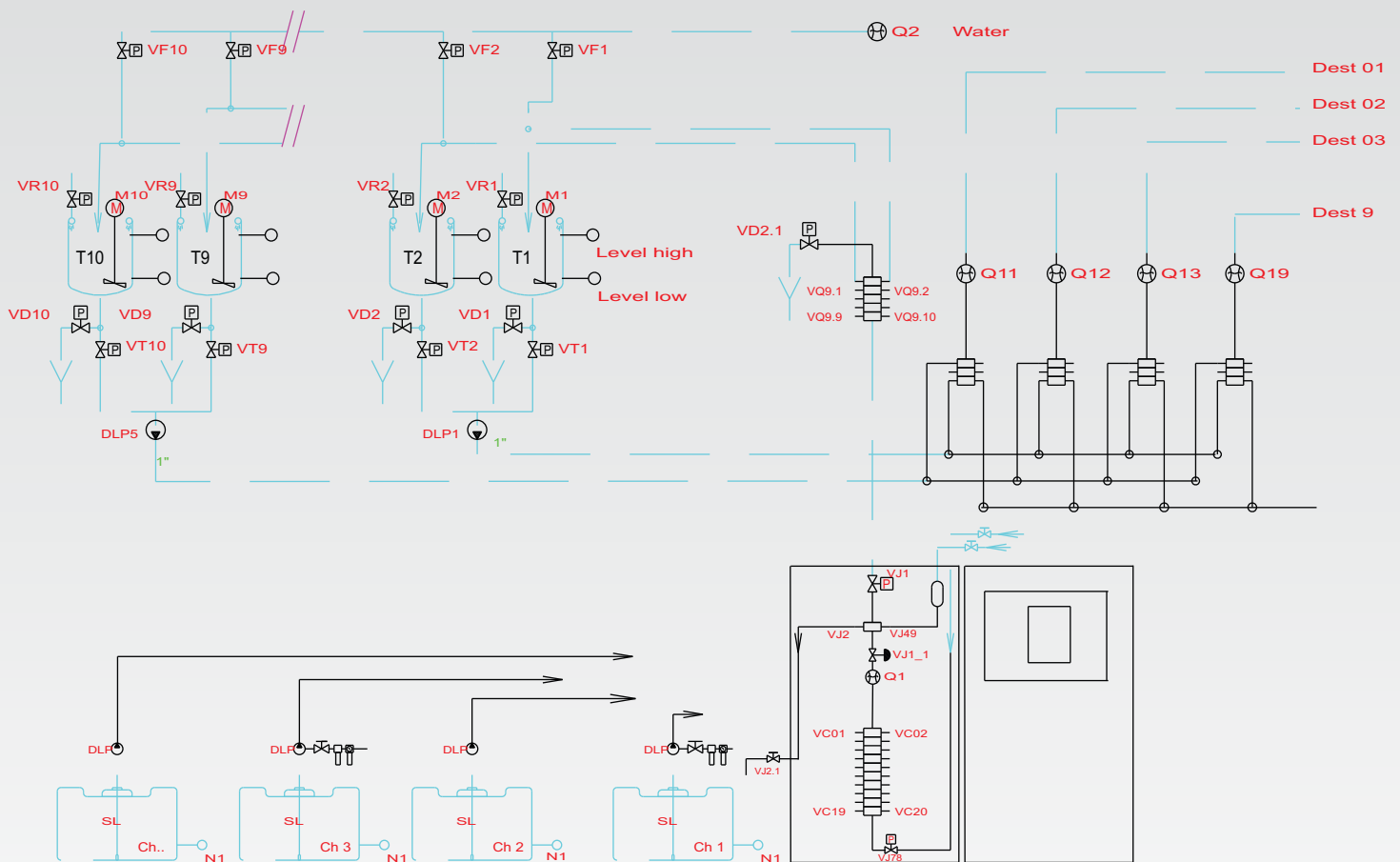
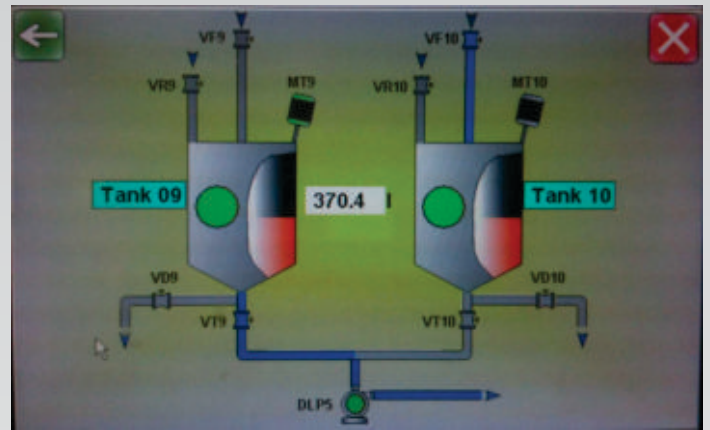


Accuracy	20 gr + 0.5 % of the dispensed amount
Time for up to 2 kg chemical	approx. 2 min.
Chemical density	0.7 - 1.5 kg/liter
Chemical viscosity	0 - 12'000 mPas

Softener Dispenser for dryers and stenters

The Softener Dispensing System CDS-P is a system based on the chemical dispenser CDS, extended with a tank farm to mix, store and supply mixed softener solutions to pads of dryers and stenter frames.

Depending on the controllers being used on the dryers and stenters, the system supplies the pads batch oriented, meaning that for each batch passing the pad, automatically the correct softener is prepared and dosed to the pad. Optionally distribution modules to measure amount of softener consumed by each pad can be supplied.



LAB-PRO GmbH
Dorfstrasse 19, CH-4806 Wikon/Switzerland

Tel.: +41 62 745 16 00
Fax: +41 62 745 16 01

info@lab-pro.ch
www.lab-pro.ch

