



SYNCHMASTER

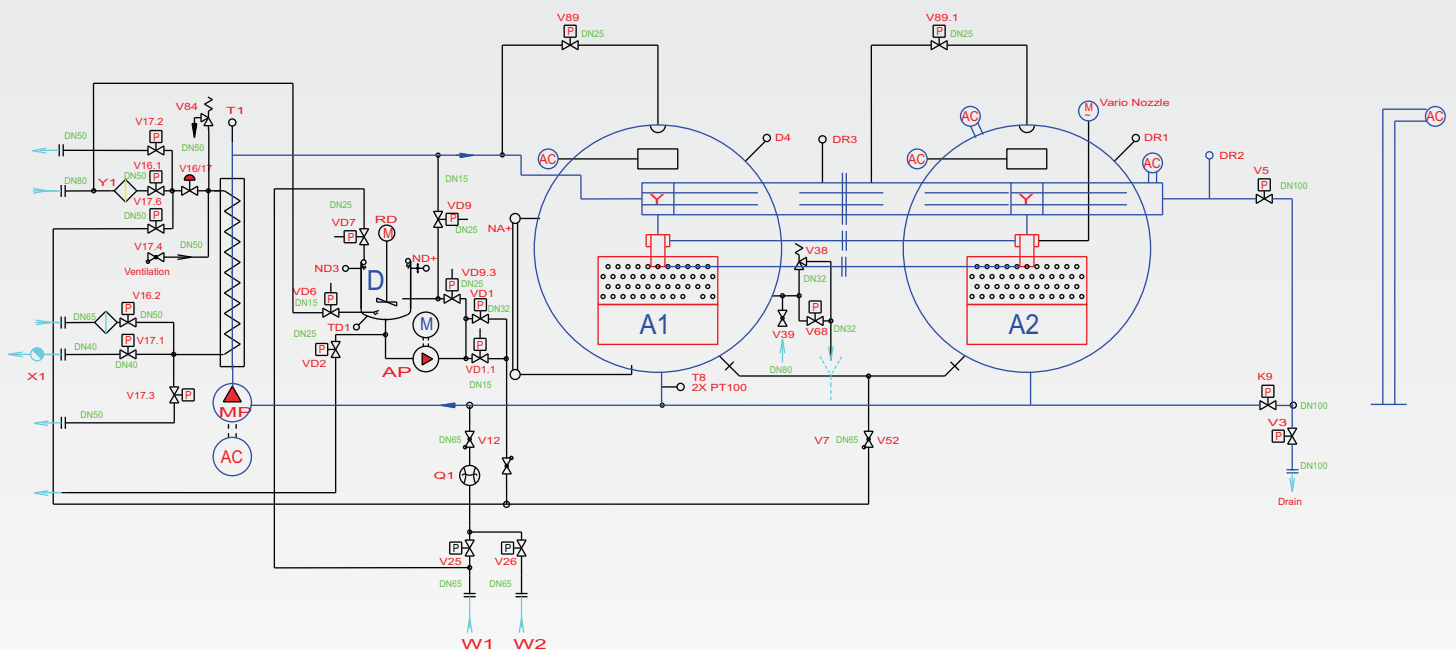
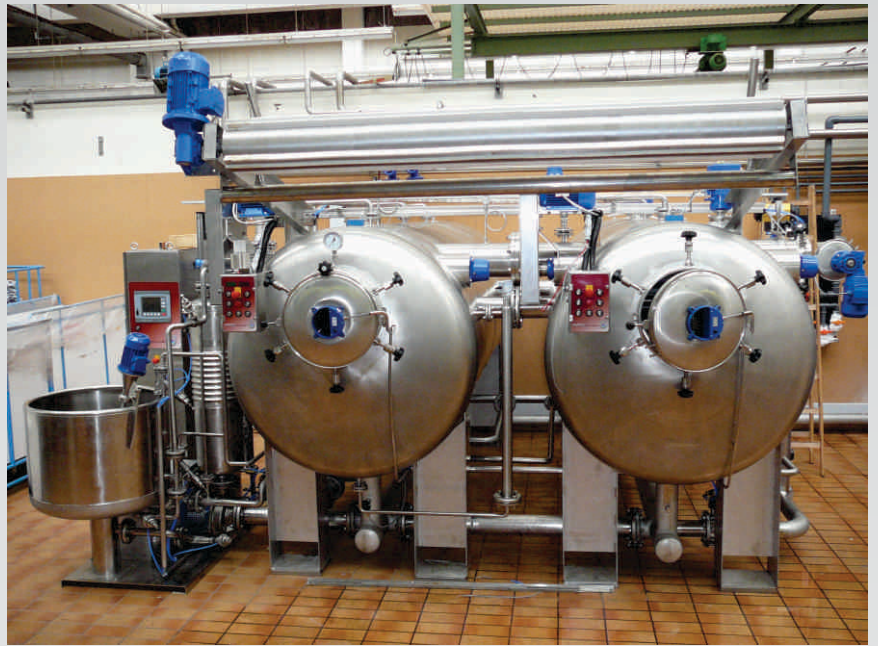
*discontinuous fabric dyeing machines
with the performance that beats everything seen before*



Unbeatable performance due to unique features

- Programmable nozzle for adjusting to fabric weight variations and programmable speed controlled internal fabric plaiter
- Self cleaning filter with automated monitoring of lint buildup
- Lowest liquor ratio of any horizontal water driven piece dyeing machine, through optimized chamber
- Fast unloading with frequency controlled unloading winch
- Programmable winch with digital speed indication
- Fast heating gradients with high capacity heat exchanger
- Halogen lighting for the inside of the machine
- Programmable nozzle pressure through speed controlled pump and differential pressure control feedback loop
- Pre-fabricated connection piping system
- Automated add tank with dosing and mixing function
- Dosing pump
- Plaiting device over full width of chamber providing best running properties

SYNCHMASTER



Gentle - No compression

The SynthMaster can dye fabrics without difficulty where other machines have to capitulate. The machine has proven of being able to dye even non-preheatsetted woven goods made of polyester as well as Lycra blends of cotton, Rayon, Nylon and Modal and even delicate wool fabrics in open width form without any rope marks or edge curling. To dye the non-preheatsetted polyester fabrics free of creases, the fabric is displaced extremely gently in the chamber and glides to the front free of compression, tension or stress.

Low lift - no stretch - no tension

Fabric lift from the chamber to the reel is less than half of the competitors' machines, which improves the fabric transport.



Master filter - automatic self cleaning filter

- Master filter is completely built inside of the machine being cleaned every time the machine is drained
- No cleaning of filter cartridges
- Elimination of external piping and external filter housing provides lower liquor ratio's
- No pressure variations in the nozzle due to lint buildup due to automatic regulation system
- No lint of fabric because of the 100% filtration of the circulated liquor

Filter

100 % filtration with inbuilt self-cleaning filter.

Layout

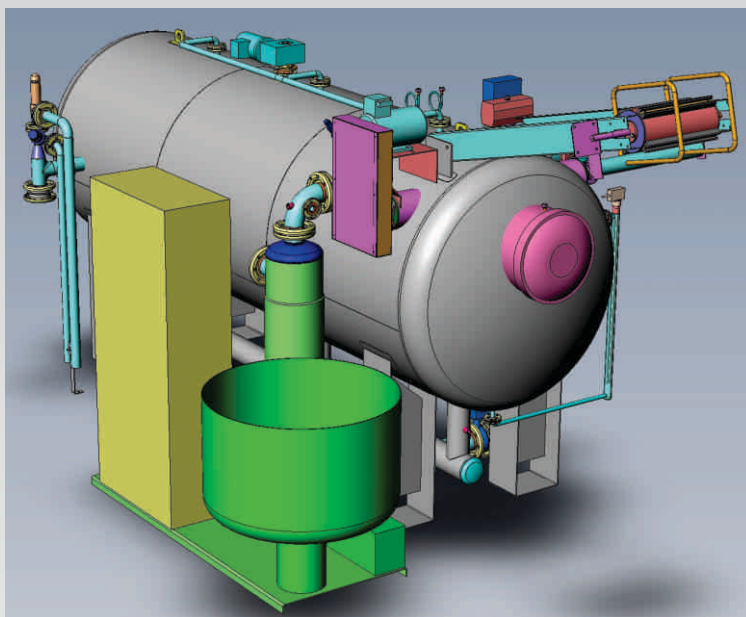
Although the autoclave is horizontal, it is shorter compared to other horizontal dyeing machines (approx. 4.5 m) allowing it to be arranged in combination with "round" machines.

Economics

Extremely low energy consumption and unmatched liquor ratio compared with other dyeing machines with long chambers.

Operator friendly

SynthMaster is easy for the operator to learn and understand due to its simplicity. All operational elements such as reel, nozzle, chamber and plaiter can be viewed during operation even under high temperature. Loading can be done without loading tape.



LAB-PRO GmbH
Dorfstrasse 19, CH-4806 Wikon/Switzerland

Tel.: +41 62 745 16 00
Fax: +41 62 745 16 01

info@lab-pro.ch
www.lab-pro.ch

