



JIGmaster

*discontinuous fabric dyeing machines
with the performance that beats everything seen before*



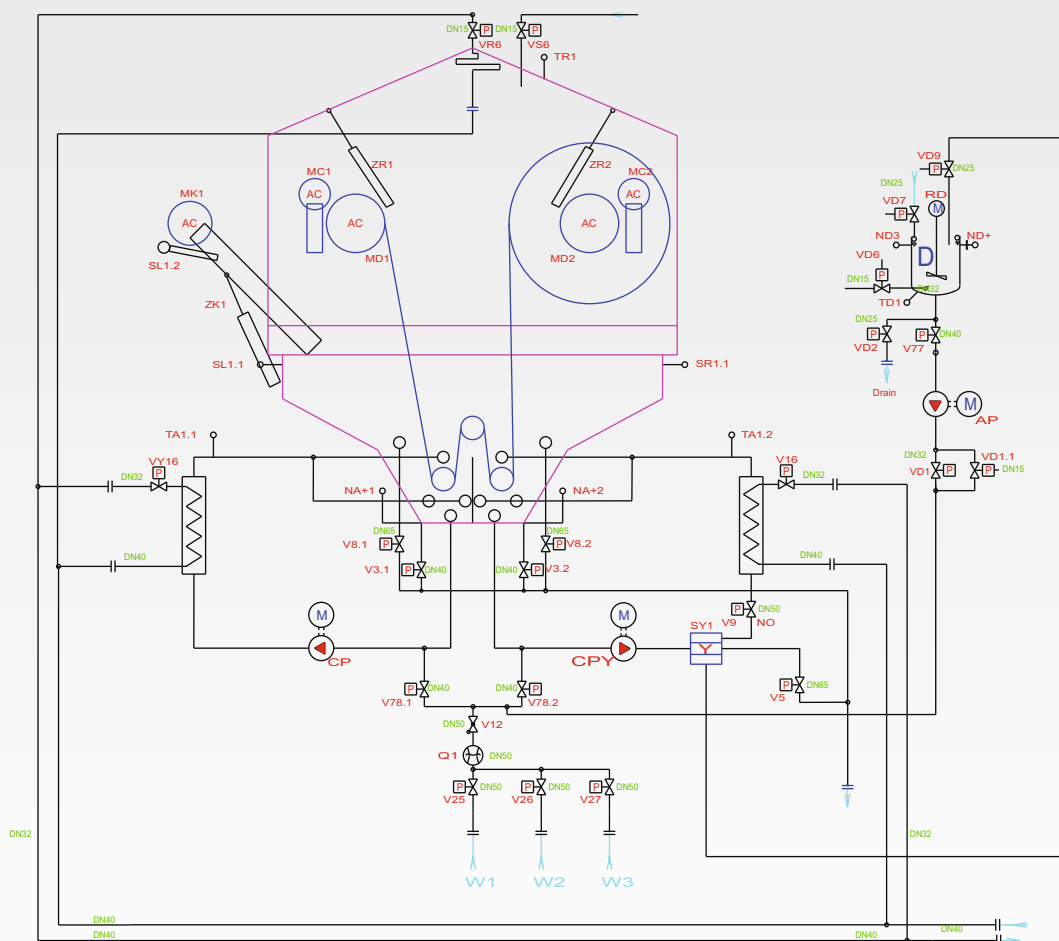
The JigMaster is loaded with functionality and features

- Available as HT-Jigger (140°C, 3.5 Bar) or atmospheric Jigger
- Optimal, constant fabric tension and speed due to frequency controlled electric drives.
- Integrated, self-cleaning filter station without maintenance intervals.
- Fast and tensionless unloading with frequency controlled debatching device.
- Frequency controlled batching rolls with digital speed indication.
- Two stainless steel circulation pumps with mechanical seal.
- Extra wide windows for free sight onto the fabric flow.
- Entire fabric width illuminated for the supervision of the process.
- Two bath execution of the vat for reduction of the rinse water.
- Balanced expanders for crease-free winding.
- Fast heating gradients with high capacity heat exchanger.

JIGmaster



- Pre-fabricated connection piping system.
- Fully automatic add tank with mixing and dosing function.
- Dosing pump



No creases

The design of batching rollers, expanders and drive technology allows even and low-tension dyeing of the most delicate and difficult woven fabrics free of crease and edge marks.

Even dyeing all through

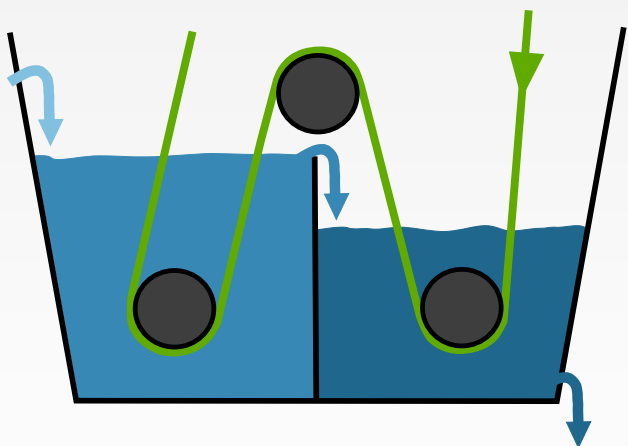
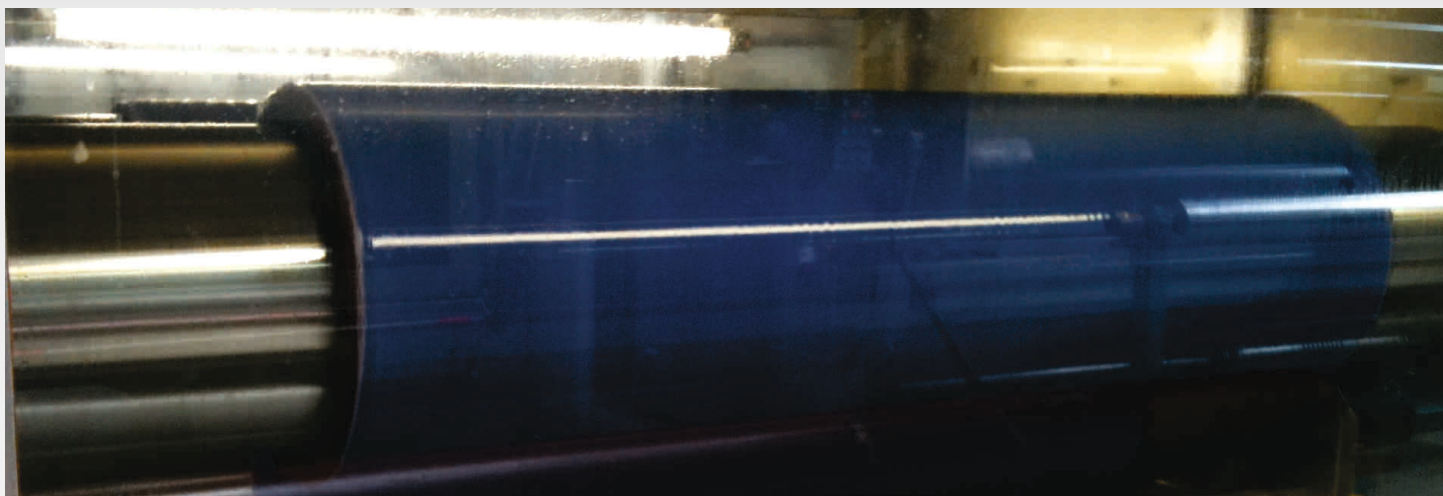
The sophisticated process control of dosing chemicals and dyes provides best results regarding even colouring from start to end and also edge to edge for even the most difficult woven fabrics.

Operator friendly

JigMaster is easy for the operator to learn and understand due to its simplicity. All operational elements such as speed, tension temperature and dosing is done fully automatic so that operator only need to load and unload the machine.

Sampling and fabric length

The fabric length is calculated by the controller and position of the sampling points can be set by the operator. When taking a sample is required the machine stops at the programmed position and sample can be taken without searching for the right point.



Economics

The shape of the vat and the low water consumption due to counter flow rinsing in the two compartments reduce time, water and energy consumption by at least 30 – 40% compared with other jig dyeing machines.

Maintenance

Because of the high tech drive technology, no additional tension sensor is required. The drive system is maintenance free.

Filter

100% filtration with inbuilt self-cleaning filter.

Performance and technical data

- Fabric width: 1400 mm - 5000 mm
- Tension: Free programmable 10 - 100 kg
- Running speed: 10 - 180 m/min
- Maximal roll diameter: 1200 mm
- Roll diameter: 1200 or 1500 mm
- Controller: Setex or Sedo-Treepoint
- HT oder atmospheric Jigger



LAB-PRO GmbH
Dorfstrasse 19, CH-4806 Wikon/Switzerland

Tel.: +41 62 745 16 00
Fax: +41 62 745 16 01

info@lab-pro.ch
www.lab-pro.ch

